

World Markets	Current	Previous	Pt. Chg	Var(%)
Dow	31962	31537	425	1.3%
Dow Futures	32001	31916	85	0.3%
Nasdaq	13598	13465	133	1.0%
FTSE	6659	6626	33	0.5%
Nikkei	30165	29672	493	1.7%
Hang Seng	30297	29718	578	1.9%
SGX CNX Nifty	15055	14806	249	1.7%
Straits Singapore	2963	2925	38	1.3%
South Korea	3059	2995	64	2.1%
Taiwan	16379	16213	166	1.0%
Shanghai	3593	3564	29	0.8%

Commodity Prices	Current	Previous	Pt. Chg	Var(%)
Copper (\$/MT)	9309	9207	102.0	1.1%
Alumin (\$/MT)	2185	2147	37.5	1.7%
Zinc (\$/MT)	2847	2855	-8.0	-0.3%
Brent Crude (\$/bbl)	67.4	67.0	0.4	0.6%
Gold (\$/Ounce)	1798	1805	-7.1	-0.4%
Silver (\$/Ounce)	28.0	28.0	0.1	0.2%
Light Crude (\$/bbl)	63.5	63.2	0.3	0.4%
N G (\$/mmbtu)	2.8	2.8	0.0	0.1%
Sugar (\$/MT)	480.5	478.4	2.1	0.4%
Rubber (Rs./kg)	160.0	160.0	0.0	0.0%
Baltic Dry Index	1727	1709	18.0	1.1%

Currency Exchange Rate	Current	Previous	Var(%)
Rs./\$ rate	72.33	72.47	-0.19%
Rs./ Euro	87.99	88.02	-0.04%
Rs./Chinese Yuan	11.20	11.20	0.02%
Yen /\$ rate	106.07	105.87	0.19%
\$ US/Euro	1.22	1.22	-0.05%

Dollar Index	Current	Previous	Var(%)
Dollar Index	90.09	90.18	-0.09%

Support/ Resistance Levels for Today		
	Nifty	Bank Nifty Fut
Support 1	14800	35640
Support 2	14720	35300
Resistance	15100	36750

Securities in Ban For Trade	
PNB	
SAIL	

Market Review

US: The Dow Jones Industrial Average traded higher in today's stock market as the blue chip index led the major indexes on the upside.

Asia: Stocks in Asia-Pacific rose in Thursday trade after the Dow Jones Industrial Average surged to a record closing high overnight.

India: NSE abruptly shut its cash and derivatives segment yesterday, following a glitch which froze stock prices, triggering panic among investors. Trading was halted at 11:40 am on the NSE and resumed only at 3:30 pm. The glitch, which came a day ahead of the monthly F&O expiry for the February series, caused massive volatility during the last hour of trade and the same may continue on Thursday as well. Sensex ended 1,030 points, or 2% higher. **Market is expected to open gap up and likely to witness positive move during the day.**

Global Economy: U.S. consumer confidence increased in February, with households slightly more upbeat about the labor market amid declining new COVID-19 infections and expectations for additional money from the government to help the economy's recovery from the pandemic. Consumer confidence index rose to a reading of 91.3 this month from 88.9 in January. Confidence remains well below its lofty reading of 132.6 last February. With additional fiscal relief coming and better progress on the vaccination front, sentiment should rise further.

Strong exports and solid construction activity helped the German economy to grow by a better-than-expected 0.3% in the final quarter of last year, but stricter lockdown measures at home and abroad are clouding the outlook for Europe's largest economy. Adjusted for calendar effects, the German economy shrank by 5.3% last year, a much smaller contraction than in many other European countries, helped by a strong fiscal response to the damage caused by the COVID-19 pandemic.

Commodities: Oil surged to the highest in more than a year as the market looks ahead toward an accelerating decline in global inventories and a comeback in demand.

Gold prices edged lower on Thursday as higher U.S. Treasury yields dented the metal's appeal, although losses were limited by a weaker dollar and Federal Reserve Chairman Jerome Powell's dovish comments.

Currency: The safe-haven U.S. dollar languished near three-year lows versus riskier currencies on Thursday as continued dovish signals from the Federal Reserve stoked reflation bets.

FII Derivative Transactions (Rs. Cr)

Contracts	Purchase		Sell		Net Value	Open Interest (OI)		OI(Previous day)		Change	
	Contract	Value	Contract	Value		Contract	Value	Contract	Value	Contract	Value
Index Future	65642	6551	60727	6108	443	144721	15512	132890	13920	11831	1592
Index Option	3016147	290922	3031092	292629	-1707	1151482	122438	1125855	118152	25627	4286
Stock Future	240937	21262	243492	21584	-322	1244756	107629	1260179	107343	-15423	286
Stock Option	94217	8629	92430	8483	146	180252	15853	191635	16628	-11383	-775
Total	3416943	327364	3427741	328804	-1440	2721211	261432	2710559	256043	10652	5389

FII All Activity-BBG (Rs Cr)	Buy	Sell	Net
17-Feb-21	8587	7396	1191
18-Feb-21	8587	7396	1191
19-Feb-21	18153	17222	932
22-Feb-21	9715	10208	(493)
23-Feb-21	9178	9523	(345)
Month to date-Feb	164989	135156	29833
FII (Prov.) (Rs Cr)	Buy	Sell	Net
18-Feb-21	9726	8823	903
19-Feb-21	8611	8492	119
22-Feb-21	9454	10347	(893)
23-Feb-21	8112	9681	(1569)
24-Feb-21	35296	6556	28739
Month to date-Feb	186743	136592	50152
DII (Prov.) (Rs. Cr)	Buy	Sell	Net
18-Feb-21	5282	6499	(1217)
19-Feb-21	3542	4717	(1175)
22-Feb-21	4804	5724	(920)
23-Feb-21	4918	4702	217
24-Feb-21	3574	3343	230
Month to date-Feb	91466	108577	(17111)
FII Debt - BBG (Rs. Cr)	Buy	Sell	Net
17-Feb-21	451	1411	(960)
18-Feb-21	451	1411	(960)
19-Feb-21	120	768	(648)
22-Feb-21	1211	2007	(796)
23-Feb-21	1501	1037	464
Month to date-Feb	12362	15914	(3552)

Market Breadth	BSE		NSE	
	No.	%	No.	%
Advance	1806	58%	1200	63%
Decline	1120	36%	632	33%
Unchanged	173	6%	88	5%

Market Turnover	24-Feb	23-Feb	Var (%)
BSE Cash	40698	4521	800%
NSE Cash	45797	75899	-40%
NSE Futures	147715	206233	-28%
NSE Options	2920128	3825821	-24%
Total (Rs.Cr)	3154338	4112474	-23%

Volatility Index	24-Feb	23-Feb
Volatility Index	24.17	25.23

Index PE – TTM	24-Feb	Yr. High	Yr. Low
Sensex	35.5	36.2	15.7
Nifty	40.9	42.0	17.2

Corporate News

Piramal Ent sets up AMC with assets worth Rs 11,000 cr

Ajay Piramal-led Piramal Enterprises said it has set up an alternatives fund management business which will house all its partnerships with global funds like CDPQ, CPPIB, APG and others as well as its own subsidiaries. The new company, Piramal Alternatives, will have assets worth Rs 11,000 cr under management. (BS)

Japan's Suzuki Motor bets big on India for its record sales target

Suzuki Motor Corporation (SMC), Japan's fourth-largest carmaker, is betting big on a recovery in the Indian market to fulfil its record sales target of 4.8 mn yen by 2025. Suzuki added that it intends to be aggressive in electrification of its cars in India, marking a change in its stance. In India, Suzuki will take the initiative in promoting electrification as required by society in order to tackle environmental issues, and maintain market share of more than 50% in the passenger car segment. (BS)

Axis entities get Irdai approval to acquire stake in MaxLife Insurance

The Irdai has given its nod to Axis entities — Axis Bank and its subsidiaries — for acquiring up to 12% stake in Max Life Insurance, paving the way for Axis firms to become a joint venture partner in the life insurance company. Axis Bank will acquire 9% stake in the life insurance company while Axis Capital and Axis Securities will acquire another 3% in the first leg of the transaction. Furthermore, Axis entities — Axis Capital & Axis Securities — will have the right to acquire another 7% in the life insurance company, something they intend to do in the coming years. (BS)

Goldman-backed ReNew Power to list on NASDAQ at \$8 bn valuation

Goldman Sachs promoted renewable power generation company ReNew Power will list on NASDAQ through a business combination with RMG Acquisition Corporation II (RMG II). The pro forma consolidated and fully diluted enterprise value is expected to be close to \$8 billion. In a public statement, ReNew announced execution of a definitive agreement with RMG II for a business combination that would result in ReNew becoming a publicly listed company on the NASDAQ. (BS)

Top 5 Nifty Gainers	24-Feb	23-Feb	Var(%)
COALINDIA	144	137	5.5%
HDFCBANK	1606	1529	5.1%
AXISBANK	749	716	4.7%
ICICIBANK	641	616	4.0%
BAJFINANCE	5563	5384	3.3%

Top 5 Nifty Losers	24-Feb	23-Feb	Var(%)
UPL	554	566	-2.2%
POWERGRID	223	226	-1.5%
DRREDDY	4436	4495	-1.3%
JSWSTEEL	408	413	-1.1%
TCS	2948	2980	-1.1%

BSE Index Watch	Last	1 day	1 wk	1 mth	1 yr
SENSEX	50,782	2.1%	-1.8%	5.0%	26.1%
MIDCAP	20,114	0.8%	-0.6%	8.4%	30.8%
SMLCAP	20,020	1.1%	0.7%	9.9%	38.6%
AUTO	23,501	0.4%	-5.1%	0.0%	41.3%
BANKEX	40,959	3.7%	-1.7%	15.8%	17.2%
Capital Goods	22,127	1.8%	-0.4%	10.8%	36.1%
FMCG	12,182	0.4%	-1.3%	-3.1%	7.7%
Health Care	21,023	0.4%	-3.7%	-2.4%	49.8%
IT	24,872	0.1%	-1.9%	-4.6%	52.9%
METAL	13,636	0.4%	5.6%	17.9%	49.9%
Oil & Gas	15,596	0.7%	4.1%	9.8%	16.3%
Power	2,405	-0.1%	1.4%	16.6%	33.1%
Realty	2,793	1.0%	-1.1%	10.9%	21.7%

NSE USD Futures	24-Feb	23-Feb	Var (%)
Feb Expiry (Rs./\$)	72.32	72.54	-0.3%
March Expiry (Rs./\$)	72.64	72.84	-0.3%
Total Turnover (Rs. Crore)	24086	40026	-40%

Sectors	TTM PE
Auto	37.22
Auto Ancillary	81.37
Banking	30.31
Engineering	25.59
Cement	31.07
Diamonds & Jewellery	122.05
Housing Finance	31.86
Infrastructure & Const	36.75
Metals-Aluminium	18.43
Metal – Steel	11.33
Oil Expl.	40.13
Pharma	31.59
Power – Gen. Supp.	23.74
Information Tech.	29.59
Sugar	5.68
Telecom Serv. Prov.	33.64
Tyres	24.59

Economy News

Government extends PLI to more sectors, announces Rs 15,000 cr for pharma, Rs 7350 cr for IT hardware

Extending the PLI scheme to more sectors, the Union Cabinet approved Rs 15,000 cr for incentives to domestic manufacturing of pharmaceuticals and Rs 7,350 cr for production of laptops, tablets, all-in-one personal computers and servers in India. The PLI scheme is an effort to make the industry globally competitive and geared towards production of high value drugs, leveraging its position as a country which already exports low cost-pharma to more than 200 nations. (ET)

Price of non-basmati rice shoots up to 15% while potato price falls by more than 65%

The price of non-basmati rice, which is consumed by more than 80% of the Indian population, has shot up by 10-15% since January, as Bangladesh has started buying large volumes of rice from India. (ET)

Copper prices on fire: India's import bill could rise by 35% in 2021

A combination of factors record high copper prices coupled with aggressive buying by China and the largest copper smelter in India remaining shut for the second year in a row will make copper imports 35% more costly in 2021. (BS)

International Corporate News

FCC says Verizon, AT&T, T-Mobile won \$78 billion in C-Band spectrum auction

The FCC said the three largest U.S. wireless companies won \$78 bn in bids in the government's auction of a band of C-Band spectrum critical to next-generation 5G networks. Verizon Communications successfully bid \$45.4 billion for 3,511 licenses, while AT&T won with \$23.4 bn for 1,621 licenses and T-Mobile won with \$9.3 bn for 142. In total, the FCC said there were \$81.2 bn in winning bids. (Inv)

Ford CEO calls on U.S. govt to support EV batteries, charging

Ford Motor Co's CEO called on the U.S. govt to support battery production and charging infrastructure development, as he outlined the automaker's plan to develop electric platforms for its top-selling trucks, vans and SUVs. (Inv)

Facebook to invest \$1 bn in news industry after Australia row

Facebook Inc pledged to invest at least \$1 billion in the news industry over the next three years, days after a high-profile stand-off with the Australian government over paying news outlets for content. (Inv)

Nokia wins 5G order from Philippines' Globe Telecom

Nokia has won an order from Globe Telecom to build a 5G network to the Philippines' second and third largest islands Mindanao and Visayas. Nokia will also upgrade the existing 4G network for the largest mobile network operator in the Philippines. Financial details were not disclosed. (Inv)

ADR Price Movement									
Company	Price (US\$)	Volume	Previous Day Price	Volume	Variance (%)	No. of Share Per ADR	ADR Price (Rs.)	BSE Price	Variance (%)
Infosys Tech	17.68	8022840	17.38	8335731	1.73%	1	1278.71	1274.30	0.3%
Tata Motors	22.13	1619237	21.93	2693824	0.91%	5	320.11	321.65	-0.5%
Wipro	6.37	2107351	6.30	3050748	1.11%	1	460.71	423.10	8.9%
Dr.Reddy's	61.00	265952	61.12	289422	-0.20%	1	4411.83	4435.55	-0.5%
ICICI Bank	17.68	6259399	17.26	7758757	2.43%	2	639.35	641.10	-0.3%
HDFC Bank	82.50	1824894	79.87	1297904	3.29%	3	1988.94	1606.45	23.8%

GDR's (US\$)				
	Prices	Prev. Close	Change	Var %
L&T	21.00	20.50	0.50	2.4%
RIL	57.30	56.30	1.00	1.8%
SBI	55.80	54.30	1.50	2.8%

10 year G-Sec Yield	Current	Previous	Change
US	1.41%	1.38%	3 bps
Japan	0.14%	0.13%	1 bps
India	6.15%	6.17%	(2) bps
UK	0.73%	0.72%	1 bps
Libor 3 Mths	0.19%	0.18%	1 bps

Indian Eco Data	Current	Previous	Var(%)
Forex Reserve (US\$ in bn)	584	590	-1.1%
Inflation - WPI	2.03%	1.22%	81bps
Inflation - CPI	4.10%	4.59%	-49 bps

India GDP	Q2FY21	Q1FY21	FY20
Growth	-7.5%	-23.90%	4.2%

Monetary Policy	Current	Previous	Change
Repo Rate	4.00%	4.00%	0 bps
Reverse Repo Rate	3.35%	3.35%	0 bps
CRR	3.00%	3.00%	0 bps
O/S Banking System Liquidity (Rs bn)	6294	6169	124

IIP Growth -%	Dec-20	Dec-19	YTD-FY21
IIP	1.0	4.2	-17.5
Mining	-4.8	-1.3	-13.3
Manufacturing	1.6	4.1	-19.7
Electricity	5.1	11.2	-5.6

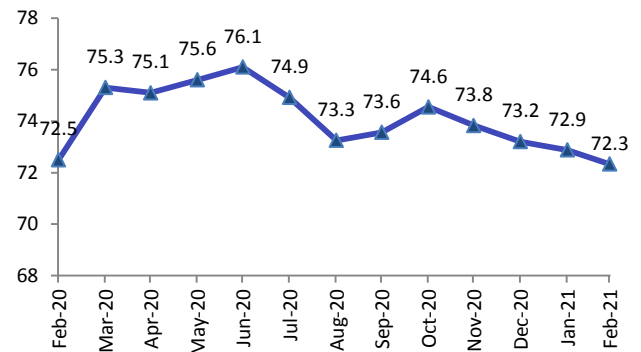
US Economy Data	Current	Previous
Inflation (%) (YoY)	1.40%	1.40%
Unemployment (%)	6.30%	6.70%

Interest Rate (%)	Current	Previous
Fed Rate	0-0.25%	0-0.25%

US GDP	Q4CY20	Q3CY20
Growth (QoQ Annualized)	4%	33.4%

China Economy Data	Current	Previous
GDP	6.50%	4.90%
Inflation - CPI (%)	-0.30%	0.20%

USD/INR (Source: BBG)



	Date
Indian GDP Data	26 Feb
Indian Inflation Data CPI	12 Mar
Indian Inflation Data WPI	15 Mar
Indian Monetary Policy	7 Apr
India's Industrial Production (IIP)	12 Mar
US Inflation Data	10 Mar
US GDP	25 Feb
US Unemployment Data	5 Mar
US Fed Rate	17 Mar
China GDP	16 Apr
China Inflation Data	10 Mar

Event Update		
Co. Name	Date	Purpose
ISGEC Heavy Engineering Ltd.	25/02/21	Rs.2.00 per share(200%) Interim Dividend
Karda Constructions Ltd.	25/02/21	Rs.0.05 per share(2.5%) Interim Dividend
Nile Ltd.	25/02/21	Rs.1.00 per share(10%)Interim Dividend
RACL Geartech Ltd.	25/02/21	Rs.1.00 per share(10%)Interim Dividend
Sandhar Technologies Ltd.	25/02/21	Rs.1.25 per share(12.5%)Interim Dividend
Techno Electric & Engineering Company Ltd.	25/02/21	Rs.3.00 per share(150%)Second Interim Dividend
Amara Raja Batteries Ltd.	26/02/21	Rs.5.00 per share(500%)Interim Dividend
Career Point Ltd.	26/02/21	Rs.1.00 per share(10%)Interim Dividend
Dharamsi Morarji Chemical Company Ltd.	26/02/21	Rs.1.00 per share(10%)Interim Dividend
Gujarat Apollo Industries Ltd.	26/02/21	Buy Back of Shares
The Yamuna Syndicate Ltd.	26/02/21	Rs.175.00 per share(175%)Interim Dividend
Smartlink Holdings Ltd.	01/03/21	Buy Back of Shares
Mahickra Chemicals Ltd.	05/03/21	Interim Dividend
Sacheta Metals Ltd.	09/03/21	Bonus issue
DIC India Ltd.	12/03/21	Rs.6.00 per share(60%)Final Dividend
Marico Ltd.	12/03/21	Second Interim Dividend
ACC Ltd.	31/03/21	Rs.14.00 per share(140%)Final Dividend

Bulk Deal AS On 24/02/21

BSE					
Scrip Code	Scrip Name	Client Name	Deal	Quantity	Price
539544	ABHIINFRA	ERRAMSHETTYRAHUL	B	40000	2.18
539544	ABHIINFRA	SWARNA KUMARI MANDAVA	S	40000	2.18
540146	ACML	DISPLAY COMMERCIAL PRIVATE LIMITED	S	82000	19.25
540146	ACML	SHAGUN BARTER PRIVATE LIMITED	S	150000	19.25
540146	ACML	YASHOVARDHAN SINHA	B	293000	19.25
542752	AFFLE	AFFLE HOLDINGS PTE LTD	S	306826	5267
542752	AFFLE	AFFLE HOLDINGS PTE LTD	S	306826	5267
542752	AFFLE	LAUDUS INTERNATIONAL MARKETMASTERS FUND	B	306826	5267
542752	AFFLE	LAUDUS INTERNATIONAL MARKETMASTERS FUND	B	306826	5267
537069	ARNOLD	INT INFRASTRUCTURE PRIVATE LIMITED	B	280730	28.1
537069	ARNOLD	RAUDRAMUKHI COMMERCE PRIVATE LIMITED	S	280000	28.1
540545	BGJL	VIVIDOFFSET PRINTERS PRIVATELIMITED	S	98995	85.56
500530	BOSCHLTD	ROBERT BOSCH GMBH	S	19984324	14742.6
500530	BOSCHLTD	ROBERT BOSCH GMBH	S	19984324	14742.6
500530	BOSCHLTD	ROBERT BOSCH INTERNATIONALE BETEILIGUNGEN AG	B	19984324	14742.6
500530	BOSCHLTD	ROBERT BOSCH INTERNATIONALE BETEILIGUNGEN AG	B	19984324	14742.6
539770	DARJEELING	CHIRAG ANANTRAI MEHTA HUF	S	15415	4.2
539770	DARJEELING	RAJENDRA NANIWADEKAR	B	21000	4.19
542803	ELLORATRAD	SANDIP KANTILAL KHATRI	S	7000	114.79
500133	ESABINDIA	ACACIA BANYAN PARTNERS	S	234970	1865
500133	ESABINDIA	SBI MUTUAL FUND	B	250000	1865
532959	GAMMNINFRA	CONNECOR INVESTMENT ENTERPRISE LIMITED .	B	21000000	0.75
532959	GAMMNINFRA	ICICI BANK LIMITED	S	19657237	0.75
540936	GGL	ARPIT PIYUSHBHAI SHAH	S	209078	58.85
540936	GGL	DIBAKAR LAHA	S	55000	58.15
540936	GGL	HIGHGROWTH VINCOM PRIVATE LIMITED	S	205000	58.64
540936	GGL	LAVINA SMIT THAKKAR	S	140000	58.23
540936	GGL	MILAN BHANUKUMAR SOLANKI	S	82234	58.82
540936	GGL	MITHUN SARDAR	S	52762	59
540936	GGL	PAVANKUMAR KETANKUMAR THAKKAR	S	75000	58.2
540936	GGL	RESHMA CHAUHAN	S	50538	58.65
500184	HSCL	BC INDIA INVESTMENTS	S	5000000	40.07
539519	MAYUKH	POONAMCHAND RUGHLAL MUNDHRA	S	22901	19
540078	MITSU	RAJULA JAYESH NAGDA	S	64800	104
540416	OCTAWARE	EMERALD COMMERCIAL LIMITED	B	75200	90.98
540416	OCTAWARE	NEHA PARAG JHAVERI	S	44800	91
540416	OCTAWARE	PAYAL YAYESH JHAVERI	S	44800	91
532340	OMNIAX	AMITA JAGDISH DEDHIA	S	59000	1.85
532340	OMNIAX	EMERALD COMMERCIAL LIMITED	B	352029	1.85
532340	OMNIAX	JAGDISH DEDHIA	S	57000	1.85
532340	OMNIAX	JALPA MANISH DEDHIA	S	59000	1.85
532340	OMNIAX	JIGNA SANJAY DEDHIA	S	59000	1.85
532340	OMNIAX	MANISH MAVJI DEDHIA	S	59000	1.85
532340	OMNIAX	SANJAY MAVJI DEDHIA	S	59000	1.85
540198	OSIAJEE	NILAM MILAN SHAH	S	34500	24.55
512217	PRISMMEDI	MANISH NITIN THAKUR .	S	52741	29.1
531952	RIBATEX	SITA RAM	S	77000	51.55
538920	SPACEAGE	PARESH DHIRAJLAL SHAH	S	50000	19.25
538920	SPACEAGE	SRINIVAS NARAYAN SANKU	B	31070	19.31
539026	SSPNFIN	DEVJEET CHAKRABORTY	B	32000	29
539026	SSPNFIN	SANGEETA CHANDU JAIN	S	64000	31.53
539026	SSPNFIN	SUBASH RAMASHISH MISHRA	B	48000	31.5
538733	STARLIT	VEEKAY APARTMENTS PRIVATE LIMITED	B	250000	20.82
538733	STARLIT	YMS FINANCE PRIVATE LIMITED	S	270000	20.74
542923	TRANWAY	ANSHUGOEL	B	60000	6.04
542923	TRANWAY	DHANANJAYSUBHASHGOEL	B	130000	5.86
542923	TRANWAY	NEHAANSHUGOEL	B	170000	6.2
542923	TRANWAY	SANTA GHOSH	S	500000	6.02
542923	TRANWAY	VEDANTGOEL	B	130000	5.9
505285	TULIVE	ASL CAPITAL HOLDINGS PRIVATE LIMITED	S	12000	192
505285	TULIVE	ATUL GUPTA	B	12000	192
542910	VALENCIA	OVERSKUD MULTI ASSET MANAGEMENT PRIVATE LIMITED	S	57000	25.65
542910	VALENCIA	VINOD HARILAL JHAVERI	B	78000	25.65

NSE

Scrip Code	Scrip Name	Client Name	Deal	Quantity	Price
ASLIND	ASL Industries Limited	ANUPAM NARAIN GUPTA	BUY	100000	17.5
ASLIND	ASL Industries Limited	SHRENI SHARES PRIVATE LIMITED	SELL	56000	17.5
BLKASHYAP	B. L. Kashyap and Sons Li	ACACIA CONSERVATION FUND LP	SELL	1322000	15.04
BLKASHYAP	B. L. Kashyap and Sons Li	RUANE CUNNIFF AND GOLDFARB INC A/C ACACIA INSTITUTIONAL PARTNERS LP	SELL	2130962	15.04
ESABINDIA	Esab India Ltd.	ACACIA INSTITUTIONAL PARTNERS LP	SELL	265000	1865.02
ESABINDIA	Esab India Ltd.	SBI MUTUAL FUND	BUY	250000	1865
JASH	Jash Engineering Limited	BELLWETHER CAPITAL PRIVATE LIMITED	BUY	94591	269.92
MOHOTAIND	Mohota Industries Ltd.	GIRABEN ATULBHAI SHAH	BUY	89000	7.56
MOHOTAIND	Mohota Industries Ltd.	VIKRAMKUMAR KARANRAJ SAKARIA HUF DAKSH CORPORATION	SELL	86999	7.55
MTEDUCARE	MT Educare Ltd	XANDER FINANCE PRIVATE LIMITED	SELL	405238	8.61
ORIENTALTL	Oriental Trimex Limited	ECOTEK GENERAL TRADING L.L.C	BUY	1184500	7.1
ORIENTALTL	Oriental Trimex Limited	SAWARNBHUMI VANIJYA PRIVATE LIMITED	SELL	1184105	7.1

Disclosure:

Research Reports that are published by Nirmal Bang Securities Private Limited (hereinafter referred to as “NBSPL”) are for private circulation only. NBSPL is a registered Research Analyst under SEBI (Research Analyst) Regulations, 2014 having Registration no. INH000001766. NBSPL is also a registered Stock Broker with National Stock Exchange of India Limited, BSE Limited, Metropolitan Stock Exchange of India Limited, Multi Commodity Exchange of India Limited, National Commodity and Derivative Exchange Limited and Indian Commodity Exchange Limited in cash and Equity and Commodities derivatives segments.

NBSPL has other business divisions with independent research teams separated by Chinese walls, and therefore may, at times, have different or contrary views on stocks and markets.

NBSPL or its associates have not been debarred / suspended by SEBI or any other regulatory authority for accessing / dealing in securities Market. NBSPL, its associates or analyst or his relatives do not hold any financial interest (Except Investment) in the subject company. NBSPL or its associates or Analyst do not have any conflict or material conflict of interest at the time of publication of the research report with the subject company. NBSPL or its associates or Analyst or his relatives may or may not hold beneficial ownership of 1% or more in the subject company at the end of the month immediately preceding the date of publication of this research report.

NBSPL or its associates / analyst has not received any compensation / managed or co-managed public offering of securities of the company covered by Analyst during the past twelve months. NBSPL or its associates have not received any compensation or other benefits from the company covered by Analyst or third party in connection with the research report. Analyst has not served as an officer, director or employee of Subject Company. NBSPL / analyst has not been engaged in market making activity of the subject company.

Analyst Certification: The research analysts and authors of these reports, hereby certify that the views expressed in this research report accurately reflects my/our personal views about the subject securities, issuers, products, sectors or industries. It is also certified that no part of the compensation of the analyst(s) was, is, or will be directly or indirectly related to the inclusion of specific recommendations or views in this research. The analyst(s) principally responsible for the preparation of this research report and has taken reasonable care to achieve and maintain independence and objectivity in making any recommendations.

Disclaimer:

This report is for the personal information of the authorized recipient and does not construe to be any investment, legal or taxation advice to you. NBSPL is not soliciting any action based upon it. Nothing in this research shall be construed as a solicitation to buy or sell any security or product, or to engage in or refrain from engaging in any such transaction. In preparing this research, we did not take into account the investment objectives, financial situation and particular needs of the reader.

This research has been prepared for the general use of the clients of NBSPL and must not be copied, either in whole or in part, or distributed or redistributed to any other person in any form. If you are not the intended recipient you must not use or disclose the information in this research in any way. Though disseminated to all the customers simultaneously, not all customers may receive this report at the same time. NBSPL will not treat recipients as customers by virtue of their receiving this report. This report is not directed or intended for distribution to or use by any person or entity resident in a state, country or any jurisdiction, where such distribution, publication, availability or use would be contrary to law, regulation or which would subject NBSPL & its group companies to registration or licensing requirements within such jurisdictions.

The report is based on the information obtained from sources believed to be reliable, but we do not make any representation or warranty that it is accurate, complete or up-to-date and it should not be relied upon as such. We accept no obligation to correct or update the information or opinions in it. NBSPL or any of its affiliates or employees shall not be in any way responsible for any loss or damage that may arise to any person from any inadvertent error in the information contained in this report. NBSPL or any of its affiliates or employees do not provide, at any time, any express or implied warranty of any kind, regarding any matter pertaining to this report, including without limitation the implied warranties of merchantability, fitness for a particular purpose, and non-infringement. The recipients of this report should rely on their own investigations.

This information is subject to change without any prior notice. NBSPL reserves its absolute discretion and right to make or refrain from making modifications and alterations to this statement from time to time. Nevertheless, NBSPL is committed to providing independent and transparent recommendations to its clients, and would be happy to provide information in response to specific client queries.

Before making an investment decision on the basis of this research, the reader needs to consider, with or without the assistance of an adviser, whether the advice is appropriate in light of their particular investment needs, objectives and financial circumstances. There are risks involved in securities trading. The price of securities can and does fluctuate, and an individual security may even become valueless. International investors are reminded of the additional risks inherent in international investments, such as currency fluctuations and international stock market or economic conditions, which may adversely affect the value of the investment. Opinions expressed are subject to change without any notice. Neither the company nor the director or the employees of NBSPL accept any liability whatsoever for any direct, indirect, consequential or other loss arising from any use of this research and/or further communication in relation to this research. Here it may be noted that neither NBSPL, nor its directors, employees, agents or representatives shall be liable for any damages whether direct or indirect, incidental, special or consequential including lost revenue or lost profit that may arise from or in connection with the use of the information contained in this report.

Copyright of this document vests exclusively with NBSPL.

Our reports are also available on our website www.nirmalbang.com

Nirmal Bang Research (Division of Nirmal Bang Securities Pvt. Ltd.)

B-2, 301/302, Marathon Innova,
Opp. Peninsula Corporate Park
Off. Ganpatrao Kadam Marg
Lower Parel(W), Mumbai-400013
Board No. : 91 22 6723 8000/8001
Fax. : 022 6723 8010